



# World of Learning

Leaders in Early Education and Care  
From Babies to Kindergarten and Preschool

**ENROL NOW**

**1800 413 995**

[worldoflearning.com.au](http://worldoflearning.com.au)



# Contents

Our Philosophy.....4

Why you’ll love World of Learning.....5

Your child’s learning journey .....6

Kindergarten and Preschool.....9

The Child Care Subsidy.....10

We support busy families .....17

How we help settle your child into care .....18

Xplor Home .....19


# Our Philosophy

*At World of Learning, we offer high-quality educational programs guided by Australia's national Early Years Learning Framework (EYLF) which enhance your child's learning through their ideas, interests, strengths and abilities while they play.*

*We provide busy families with high quality care by qualified, caring and committed educators for children from six weeks to six years.*







# Why you'll love World of Learning

At World of Learning you'll feel confident knowing your child is engaged in a nurturing environment, participating in innovative education programs that prepare them for a smooth transition to primary school.



Experienced team of educators  
engaging your child in learning  
from Nursery through to  
Kindergarten/Preschool



Year-round program offering  
9 hr, 10 hr and full day sessions  
to optimise Child Care Subsidy  
entitlements for busy families



Spacious outdoor areas  
promoting exploration  
with peers and the natural  
environment



Nutritious and delicious  
meals daily



Enhanced Learning Program for  
Kindergarten and Preschool in  
addition to the government-  
approved program available in  
your state



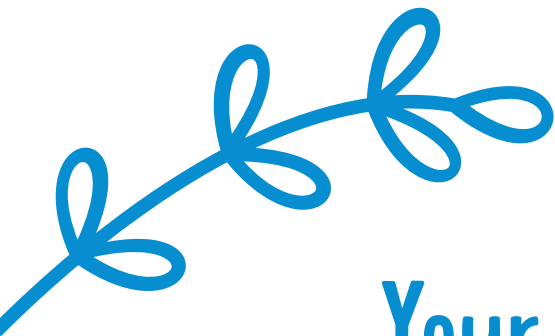
School readiness focus beyond  
numeracy, literacy, and oral  
language, to foster independence,  
confidence and resilience



Innovative Rhythm and Resilience  
program (RAMSR) designed to  
enhance your child's emotional  
regulation, memory and more



Open communication  
channels between centre and  
your family through our app,  
face-to-face discussions, written  
observations and more



# Your child's learning journey

## ***Starting out***

Our educators are passionate about understanding the individual needs of children in our care. They'll partner with you to learn your child's routine, interests and requirements to make the transition into early learning a smooth one for you and your family.

## ***Nursery***

We pride ourselves on providing a welcoming, age-appropriate, stimulating nursery environment where each child feels safe to explore and discover.

Babies and infants learn and develop through play-based explorations using their senses in specifically designed indoor and outdoor learning environments.

## ***Toddler***

Play-based approaches are at the core of our toddler program, through learning experiences such as engaging in dramatic play, early reading experiences, problem solving, giving and following directions and group play.

## ***Preschool and Kindergarten***

Our Enhanced Learning Program for Kindergarten and Preschool goes beyond core curriculum areas of numeracy, literacy and oral language, to utilising innovative, evidence-based programs that support every child's self-regulation, confidence and resilience.

While preparing them for their first day of school, we're also setting them up with the skills and understanding they need to confidently find their place in the world as they grow.









# Our Government-Approved Kindergarten and Preschool Program

World of Learning offers a year-round Kindergarten and Preschool program delivered by our bachelor-qualified Early Childhood Teachers. You can expect big things for your child with our focus on encouraging new connections and friendships, while also advancing their early language, literacy, numeracy, problem-solving and social skills.

Even better, we offer an Enhanced Learning Program for Kindergarten and Preschool that is tailored to accommodate your child's individual learning and development needs, helping to ensure a smooth transition to primary school.

## The top 7 benefits of attending our Kindergarten and Preschool Program

Attending our high-quality Kindergarten or Preschool program will provide opportunities for your child to:



Grow in confidence, developing a positive view of themselves as a learner



Develop resilience and self-regulation through engaging in activities that challenge them



Use language effectively to communicate ideas, feelings and needs



Develop literacy skills, creatively expressing ideas and feelings through art, music, storytelling and dramatic play



Make friends and engage in group activities where they cooperate with their friends



Develop scientific and numeracy skills as they identify, explore, examine and question to solve problems



Learn to look after their belongings

# The Child Care Subsidy: Our Easy Starter Guide

The Commonwealth Government Child Care Subsidy (CCS) is a Services Australia payment that helps make the cost of high-quality early education and care more affordable for Australian families. Understanding CCS and how it applies to your circumstances may be tricky to navigate. We're here to help you understand CCS and make the most of your entitlements.

Our centre teams and Family Support Team are also available to guide you, along with making suggestions for optimising your subsidy.

## ***Am I eligible for the subsidy?***

You may be eligible if:

- You or your partner care for the child a minimum of two nights per fortnight
- The child meets immunisation requirements
- You or your partner are responsible for child care fees
- You use an approved child care service – like us!

## ***How do I apply?***

The best way to apply for CCS is through your MyGov Account that is linked to Centrelink. The CCS works on four factors:

- **Your total combined family income**
- **The number of children you have in care**
- **The service type.** This can be long day care, or outside-hours care such as vacation care
- **How much recognised participation you and your partner undertake each fortnight.** This includes paid work, volunteering, study and other activities as determined by [servicesaustralia.gov.au](https://servicesaustralia.gov.au)

Job hunting, studying, starting a new business and volunteering are all recognised activities.



## Government Recognised Activity

### Types of recognised activity



Paid work,  
including leave



Volunteering



Studying  
(approved course)



Time taken to  
travel between  
the child care  
service and  
your place of  
work, training,  
study, or other  
approved  
activity will also  
be included.



Self-employed  
work



Working for free  
(in the family business)



Actively job  
seeking

*Hours of recognised participation per fortnight* = *Hours of subsidised care, per child, per fortnight*

48 hours or less

72 hours

More than 48 hours or

100 hours

Caring for an Aboriginal and/or  
Torres Strait Islander child

100 hours

All CCS eligible families are entitled to a min. of 72 hours subsidised care per fortnight regardless of recognised participation level.

**100  
HOURS**  
SUBSIDISED  
CARE

*You may be able to access 100 hours of subsidised care per fortnight for a child if:*

- you have more than 48 hours of recognised participation each fortnight.
- are caring for an Aboriginal and/or Torres Strait Islander child
- have an exemption or experience exceptional circumstances, or
- receive Additional Child Care Subsidy (ACCS) child wellbeing, temporary financial hardship or grandparent payments.

### How much am I entitled to?

Visit [www.worldoflearning.com.au/childcare-subsidy/childcare-subsidy-calculator](http://www.worldoflearning.com.au/childcare-subsidy/childcare-subsidy-calculator) and find our easy-to-use calculator to work out what you may be entitled to.\*

You can also visit

[www.worldoflearning.com.au/childcare-subsidy/child-care-subsidy-explained](http://www.worldoflearning.com.au/childcare-subsidy/child-care-subsidy-explained) for more subsidy information, or contact us on 1800 413 995 to help you work it out!

*\*Results are an estimate only.*



# Helping work out your out-of-pocket cost

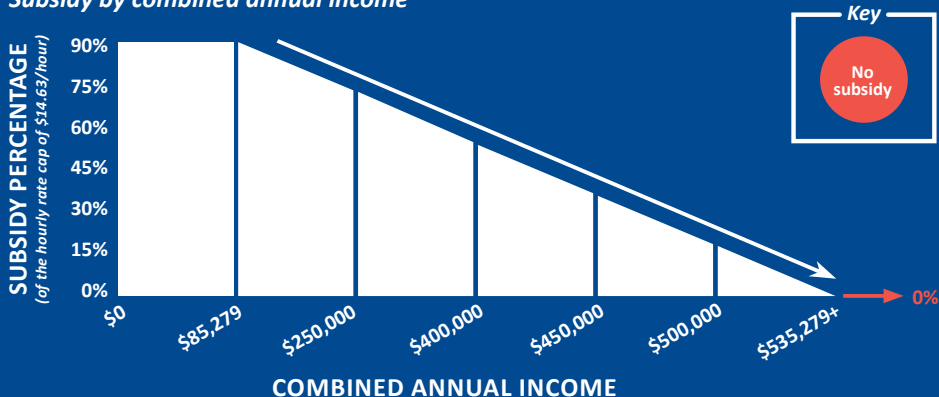
It's great to know what your early education and care centre charges for a day, but what you really need to know - for family finance purposes - is what you'll need to pay out of pocket.

The subsidy you will receive and any applicable cap will depend upon your own personal circumstances and is subject to your combined family income, hours of recognised participation and child care details. Even if you are currently receiving Child Care Subsidy, you will need to update your details through your Centrelink account on MyGov. For more information visit The Department of Education's website at [education.gov.au/early-childhood](https://education.gov.au/early-childhood).



## Here's how much you can expect to get covered, on average.

**Subsidy by combined annual income**



\*Based on eldest or only child. Families with more than one child in care may be eligible for a higher subsidy for their second child and younger children.

\*The \$14.63 hourly cap applied above is a 2025/2026 FY figure.

\*\*Based on information from the Family Assistance Law and Services Australia website, information in this graphic is subject to change.



# Complying Written Agreement (CWA)

If you require a change to your booking patterns due to an addition or reduction of days, a change in session times, or if there is a change to our fee, your Complying Written Agreement (CWA) will be updated by our Centre and an updated CWA will be issued via our Child Care Management Software (Xplor) to be agreed to by the Primary Carer (parent CCS is linked to). This is a legal requirement under Family Assistance Legislation.

If your family is ineligible for Child Care Subsidy (CCS), our centre may create a Relevant Arrangement (which is an arrangement to provide care to children who do not get CCS).

**Families can view their current CWA on both the Xplor Home App and on the Xplor website once enrolled with a G8 centre.**

## NEED TO COMMENCE CARE?

We are committed to ensuring your children thrive through learning for life.

If you are a new family looking to find out more about how to enrol and learn more about your possible entitlements, please contact our Family Support Team on 1800 517 231.

Further information about CCS can also be found on the Services Australia website at [www.servicesaustralia.gov.au/child-care-subsidy](http://www.servicesaustralia.gov.au/child-care-subsidy).













## We support busy families

If you work, study or need additional flexibility in your day, you'll be pleased to know our Centres offer 9, 10, 11 or full-day sessions with nutritionally balanced meals served throughout.

Most centres offer extended opening hours, Monday through to Friday, and are open year-round including during school holidays (excluding public holidays).





# How we help settle your child into care

Transitioning into a new education and care environment can be exciting and enjoyable for both children and families, yet can also bring moments of worry; and building relationships with educators and adapting to a new environment can take some time.

However, prior to your child's first day, our educators will work in collaboration with you to learn as much as possible about your child and their routine. This includes understanding who is in their family, their interests, sleep times, eating habits, and further information so we can extend your home environment into our early education and care centre to make it a seamless transition for your child.

## ***Stay and Play***

Our Stay and Play Programs are a great opportunity for families and children to get a better feel for our centre, team, and routines. Think of our Stay and Play program as a chance to learn first-hand about our centre, by spending time with the teachers and educators who will be nurturing and educating your child.

## ***We're here to help***

While many children will embrace their new environment with eagerness and enthusiasm, some might be more apprehensive.

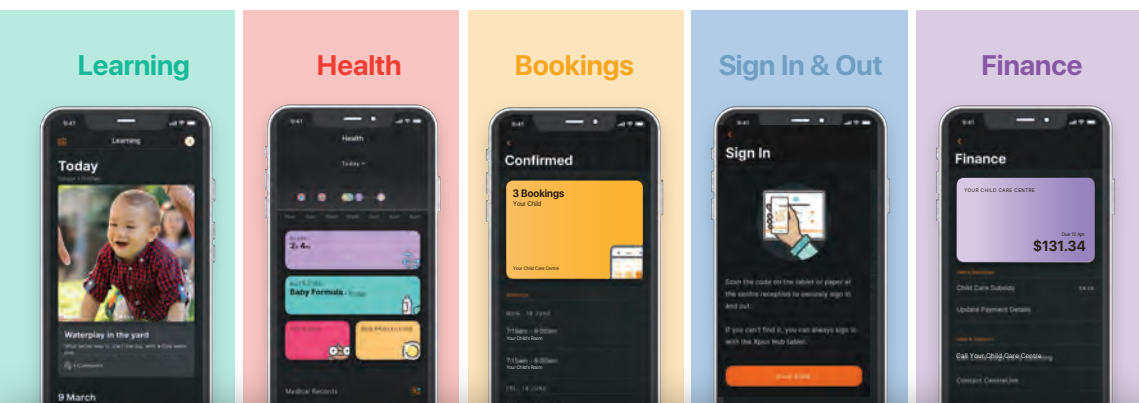
We encourage families to contact our team at any time during the day with any questions or updates you may need.

As your child begins to feel more confident and comfortable in their new environment, a confident drop-off routine will soon emerge.

**We look forward to welcoming you and your family into our centre.**

# The benefits of becoming a World of Learning family

## Xplor Home – Our parent app



## Features and benefits at your fingertips

- Easy sign in and out with QR codes
- Your child's own health timeline
- Simple mobile bookings
- Your child's own learning timeline
- Customised notifications
- Manage Account Payment
- Access financial statements on your device
- Emergency contact and guardian management



**Download the  
app today!**



# Enrol your child at World of Learning today

Our Family Support Team will follow up with you shortly to discuss your enrolment options at World of Learning.

If you have any further questions about our centre, contact our  
Family Support Team directly on

**1800 413 995**